

Matching Kind or Unkind Self Correcting Puzzles

In this activity, students consider multiple behavioral choices and match the correct rule showing kind behavior for each situation. They will demonstrate an understanding of the rules and choose kind alternatives to typical impulsive or self centered behavior.

Skills: reading, color recognition, shape recognition, scissor cutting, self awareness, positive choices, socialization

1. Students cut the two largest sides out of cereal boxes for card stock.
2. Students glue one page to each card stock piece.
3. Students (or teacher) cut along thick black lines to separate the pieces.
4. independent student use:
 - a. Using all pieces, students match each negative choice to the corresponding rule or positive choice.
5. teacher guided use:
 - a. Given one of each rule piece, students are presented with a negative behavior and choose which rule shows the positive alternative choice.

Instead of talking right now...



Instead of talking all the time...



Instead of screaming and shouting...



Raise your hand to speak.



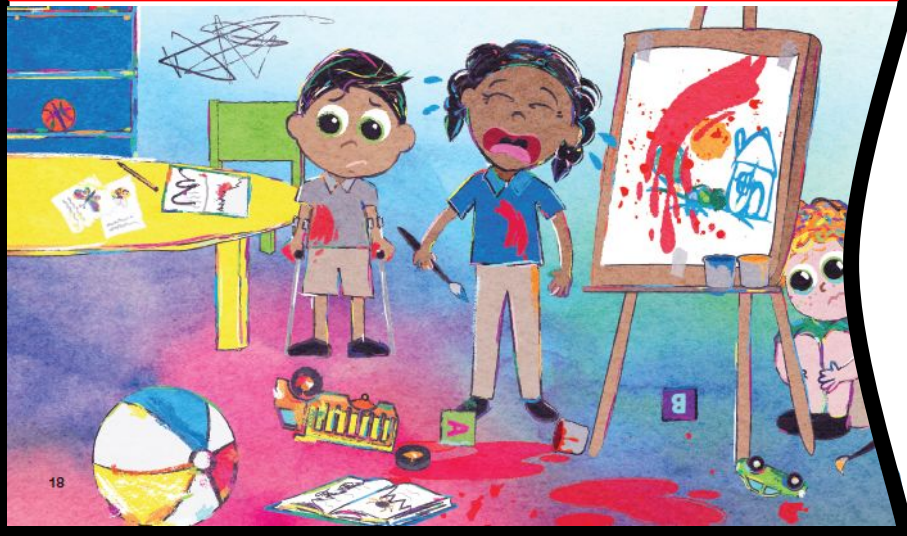
Instead of throwing things...



Instead of ruining books...



Instead of making a big mess...



Be gentle.



Instead of taking things without asking...



Instead of pulling it out of someone's hand...



Instead of hurting someone to get it...



Keep your hands to yourself.



Raise your hand to speak.



Be gentle.



Keep your hands to yourself.



Raise your hand to speak.



Be gentle.



Keep your hands to yourself.

